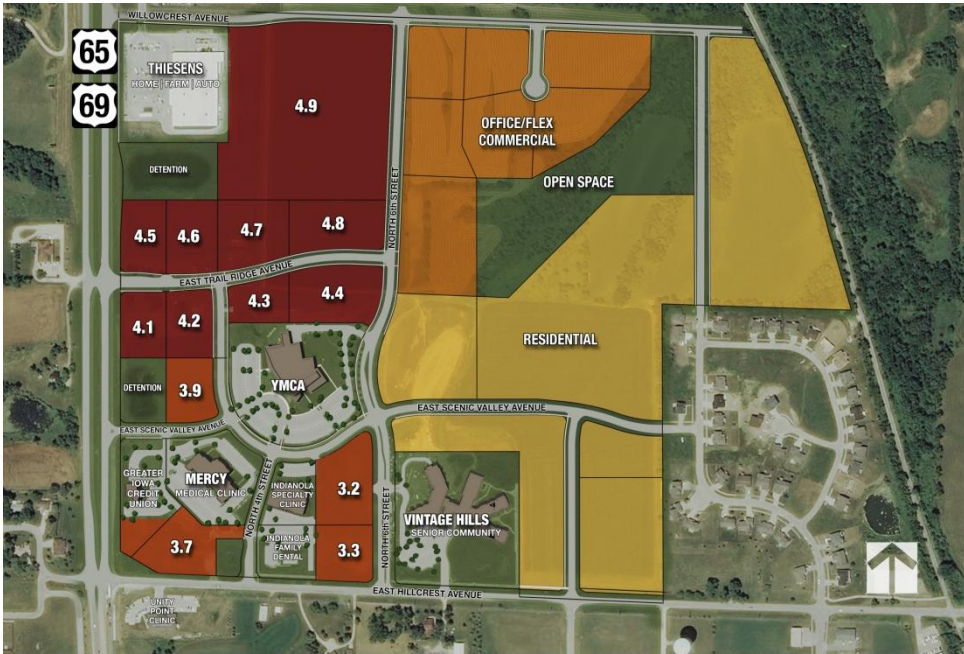


Summercrest Hills

US 65/69 and East Hillcrest Avenue
Indianola, Iowa



LAND AVAILABLE

for sale • build-to-suit
BROKERS PROTECTED

- 160 acre mixed-use development
- Zoned Highway Commercial C-2
- Lots 4.7-4.9 are adjustable to meet buyer's lots size
- Median HH Income (Warren County) is \$60,000
- Quick access to Hwy 5 and downtown Des Moines
- Traffic count: 22,000 vehicles/day

PLAT 3 DEVELOPED LOTS			
LOT	SQUARE FEET	ACRES	PRICE/SQ. FT.
3.1	288,692	6.63	SOLD
3.2	90,984	2.09	SOLD
3.3	64,282	1.48	\$6.00
3.4	63,576	1.46	SOLD
3.5	61,107	1.40	SOLD
3.6	142,029	3.26	SOLD
3.7	108,464	2.49	\$12.00
3.8	77,101	1.77	SOLD
3.9	61,837	1.42	SALE PENDING

PLAT 4 AVAILABLE SUMMER 2015			
LOT	SQUARE FEET	ACRES	PRICE/SQ. FT.
4.1	60,753	1.39	CALL
4.2	63,335	1.45	CALL
4.3	52,155	1.20	CALL
4.4	103,805	2.38	CALL
4.5	66,221	1.52	CALL
4.6	76,000	1.74	CALL
4.7	93,654	2.15	CALL
4.8	79,279	1.82	CALL
4.9	583,704	13.40	CALL

CONTACT

Tim Walpole • Licensed Iowa Real Estate Broker

515.457.8185 • tim@three-sixtygroup.com • www.three-sixtygroup.com

three-sixty group • 5625 Mills Civic Parkway Suite 101 • West Des Moines, Iowa 50266

We obtained the above information from sources we believe to be reliable. The information is subject to change without notice. (5.1.2014)